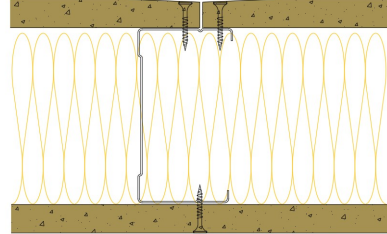


AS92-S-163(100) - SPEEDLINE System Data Sheet - Version V1 (24-10-23)

SPEEDLINE 92mm Acoustic 'C' Stud Partition
 @600mm Ctrs, with Siniat GTEC 15mm
 Universal/Megadeco Board each side, 100mm APR



System Performance Breakdown

Fire Resistance:

BS476 Part 22:1987:

Test Ref & Date or Applied Ref & Report:

Max Height:

Thickness:

Duty Grade: BS 5234: Part 2:1992:

Sound Insulation:

60/60 Minutes (Integrity/Insulation).

BTC 17444F - BRE Report P102396-1011C

Refer to Speedline Specification Clause

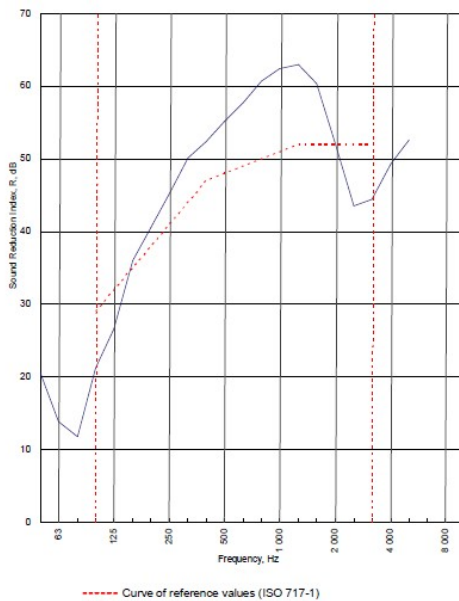
124 mm. (At Base Track, Excluding Finishes)

Severe - Annexes A-F

50 R_w dB, Date Tested or Assessed Against - AS70-S-163(50)+2dB

Test Code:
H17524AA
 Test Date:
 09/08/2011

Freq. Hz	R dB
50	20.6
63	13.9
80	11.8
100	21.2
125	26.6
160	36.0
200	40.6
250	45.1
315	50.1
400	52.4
500	55.1
630	57.7
800	60.7
1 000	62.4
1 250	63.0
1 600	60.4
2 000	52.0
2 500	43.5
3 150	44.4
4 000	49.3
5 000	52.6
6 300	
8 000	
10 000	



Rating according to BS EN ISO 717-1:1997
 R_w (C;Ctr) = 48 (-3;-8) dB
 Max dev. 8.5 dB at 2 500 Hz

C_{50-150} = -7 dB	$C_{50-1000}$ = -6 dB	$C_{100-5000}$ = -2 dB
$C_{3,50-3150}$ = -17 dB	$C_{3,50-4000}$ = -17 dB	$C_{3,100-4000}$ = -8 dB

TESTED AT ONE OF THE UKAS ACCREDITED LABORATORIES BELOW

B.T.C (H-Ref on Graph)	
B.R.E	
AIRO	
S.R.L	

Customer: Metsec plc Hepsec Division

BTC 17524A: Page 9 of 11

